



**ANIMA**  **LAB**  
animal facility and laboratory equipment • animal research models

We help to discover  
**new possibilities**



[animalab.eu](http://animalab.eu)



**We offer only  
the very highest quality**

Animalab has been active on the market since 2004. We provide comprehensive services for universities, scientific laboratories, pharmaceutical and biotechnological companies with laboratory animals, vivarium equipment and devices for research in vivo and in vitro.

We offer research services and transport of laboratory animals.

Thanks to our subsidiary in Prague we entered the market in middle Europe, namely Czech Republic and Slovakia in 2014, Hungary in 2016.

We invite you for cooperation.

**We create opportunities  
and build trust**

With our products we provide customers technical and service support. We can help you with selection of the best research models, equipment and consumables or prepare necessary trainings.

Our pride is reliability and flexibility along with successful sales and references from many satisfied institutions, universities or individuals and business partners.

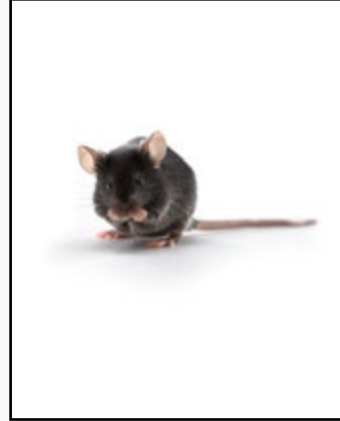
## We offer a comprehensive service in following areas:



Phenomaster - measurement of behavioral parameters in homecages.  
TSE GmbH



MEA Maestro - research of neural cells and cardiomyocytes.  
Axion Biosystems



Original C57/BL6J mice strain.  
Charles River



Individually ventilated rack. NexGen with wireless control.  
Allentown

### In vivo research

Complete equipment for behavioral studies, especially activity measurements, explorations of motor functions, anxiety and depression.

Devices for recording physiological, inhalant, metabolic and calorimetric parameters of laboratory animals. Telemetry, measurements of blood flow and O<sub>2</sub> levels in tissue.

### In vitro research

Systems for research of isolated heart, testing of internal organs and tissues, myographs, hypoxic chambers, systems for analysis of neural networks and cardiomyocytes on MEA platforms.

### Animal models

Different models of laboratory animals (mice, rats, gerbil, hamsters, rabbits or guinea pigs) kept in standardized SPF or SOPF environment.

We supply animals with health monitoring report with the approval of FELASA.

### Animal facility equipment

We specialize in projects and complete equipment of vivariums.

We offer conventional systems as well as IVC systems, isolators, autoclaves, washing machines, racks and trolleys, working stations and software for vivarium management and identification system RFID.

We provide surgery supplies and equipment, anesthesia and euthanasia systems, osmotic pumps and automatic infusion devices.

**We are professionals**





Aspen bedding. Abedd



Educational system LabTutor. ADInstruments



SENTINEL - effective monitoring of animal health using analysis of the air in the IVC racks. Allentown

**animalab.eu**

### Diet and bedding

Complete offer of specially prepared diet according to scientific requirements for all kinds of laboratory animals.

Diets especially designed to fit welfare of the animals.

Animal bedding from aspen and spruce, enrichment for laboratory animals, material for nesting - cotton and cellulose.

### Educational systems

Systems LabTutor for active education of students and assistants in biological, medical and nursing areas.

The sets are meant for teaching experiments in physiology of human and animals, biochemistry, pharmacology, neurobiology, psychophysiology and general biology.

### Services

We also offer animal health monitoring in compliance with FELASA regulations, as well as rederivation projects and in vitro fertilisation. We manage outsourcing of animal breeding and pre-clinical research.

### Animal transport

We manage complete plane or car transport of laboratory animals in all of Europe and beyond its borders, including all the veterinary and border controls.

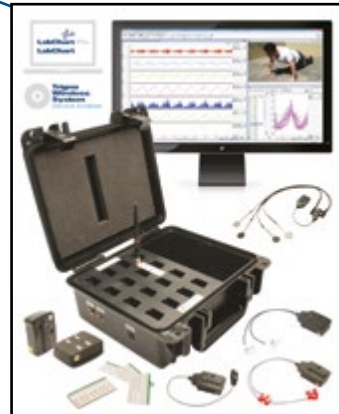
Our cars are equipped with temperature recorders and built for animal transfer. They are approved by veterinary control for long-distance animal transportation.



## News



Stereotaxic robot with digital integrated brain atlas. Neurostar



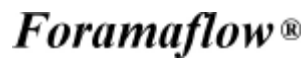
Wireless system Trigno for recording of ECG, EMG and FSR. ADInstruments



Tabletop CT scanner InSyTe for small animals. TriFoil

**We are looking forwards for our cooperation**

**We cooperate with:**



AQUATIC ECO-SYSTEMS





**AnimaLab Sp. z o. o.**

Dąbrowskiego 343  
60-419 Poznań  
Poland

Ph: + 48 61 861 60 04  
E: [info@animalab.pl](mailto:info@animalab.pl)

[animalab.eu](http://animalab.eu)