

Disease & immunodeficient animal models

AnimaLab is the exclusive distributor of Charles River and The Jackson Laboratory in Baltics, Poland, Hungary, Croatia and Slovenia. Our services include consulting in the selection of the appropriate animal model for experiment and the organization of delivery.

We offer Animalab door-to-door transportation services organised and realised by our car fleet as well as air transportation in cooperation with Charles River and The Jackson Laboratory.

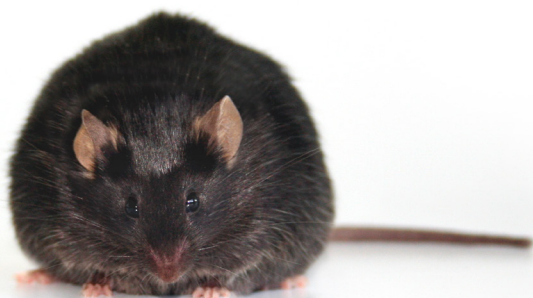


ABOUT CHARLES RIVER

- Over 100 animal models supports more than 80% of the drugs approved by the FDA for the past 3 years
- Models that set the standards in research, like C57, Wistar, CD®
- Extensive network of animal facilities in many European countries and in USA

ABOUT JAX

- Over 12,000 strains of genetically-specialized JAX® Mice
- JAX's Mouse Genome Informatics database is the world's source for information on mouse genetics and biology
- JAX's Clinical Knowledge Database (CKB) allows researchers and clinicians to interpret complex cancer genomic profiles



JUST CONTACT US AND DISCUSS YOUR NEEDS. WE DELIVER ANIMAL MODELS FOR MANY RESEARCH APPLICATIONS:

- Autoimmune & inflammatory
- Antibody production
- Cardiovascular
- Dermatology
- Metabolic diseases
- Infectious diseases
- Neurobiology
- Inherited and rare diseases
- Immunology
- Oncology
- Transplantology
- Toxicology



Services for your research

- Custom animal models generation
- Outsourcing of colony management
- Surgical & preconditioning service for your experiments
- Germ-free animal models breeding
- Animal Model Evaluation Program to assess the quality and compatibility Charles River's models before buying

Immunodeficient, oncology animal models



Backed by decades of technical and scientific experience, Charles River's and The Jackson Laboratory gives you the widest immunodeficient animal model portfolio with access to high valuable resources could help you to choose the best model for your research.

Strain	Hair	T cells	B cells	NK cells	Species	Type
Athymic Nude	-	-	+	+	mouse	outbred
CD-1® Nude	-	-	+	+	mouse	outbred
Nu/Nu Nude	-	-	+	+	mouse	outbred
Swiss Nude	-	-	+	+	mouse	outbred
NMRI Nude	-	-	+	+	mouse	outbred
BALB/c Nude*	-	-	+	+	mouse	inbred
NIH-III	-	-	-	impaired	mouse	outbred
CB17 SCID	+	-	-	+	mouse	congenic
SHO® (SCID Hairless Outbred)	-	-	-	+	mouse	outbred
SHC (SCID Hairless Congenic)	-	-	-	+	mouse	congenic
SCID Beige	+	-	-	impaired	mouse	congenic
NOD SCID*	+	-	-	impaired	mouse	congenic
NOD SCID gamma NSG® *	+	-	-	-	mouse	inbred
NOD rag gamma (NRG)*	+	-	-	-	mouse	inbred
Nu/Nu	-	-	+	+	rat	outbred

*JAX® strain

Use The Core

The Core (Collection of Oncology Research Experiments) is an online library of peer-reviewed publications designed to help you find the most appropriate research model for your oncology cell lines.

Search through the publications on Charles River's website at: www.criver.com/core-library

Check xenograft data

Charles River has compiled xenograft data on the following models in an effort to assist you in expediting your model selection process. Data are available for strains: Athymic Nude Mouse, Fox Chase SCID® Mouse, Fox Chase SCID® Beige Mouse.

Download the data at: www.criver.com/xenograft

