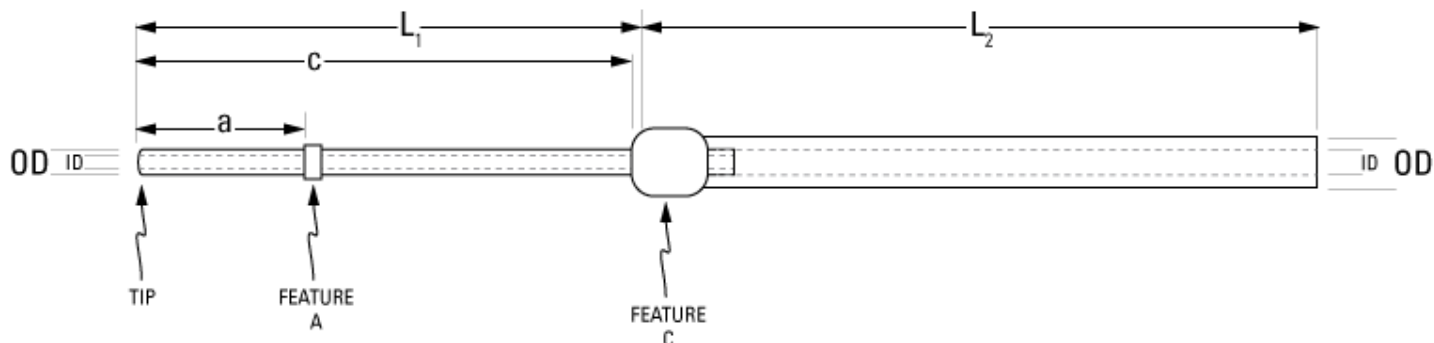


Part Number: **C10PU-MCA1513**



not to scale

Full Description: Catheter for mouse carotid artery, 1 to 3Fr, 8cm, fixed collar @ 1.2cm. Fits 22ga.

Unit: each **Pouch Desc:** Mouse CAC PU 1-3Fr 8cm **Pouch:** 3x7.5

Approx Dead Vol: 17 μ L **Connects to:** 22ga **EO Sterilized:**

Intended Species: mouse **Vessel:** carotid artery

Usage Notes:

TUBING

Tip: rounded *Length 1* *Length 2*
L1: 2.5 cm **L2:** 5.5 cm
Material (IDxOD): PU 1Fr (.18x.35 \pm .05mm) **Material (IDxOD):** PU 3Fr (.62x1.02 \pm .03mm)

FEATURES

<i>Distal (tip) end</i>		<i>Location</i>	<i>Fixed</i>
Feature A:	Small silicone collar for 1Fr (0.6mm OD), 1mm wide	a: 1.2 cm	<input checked="" type="checkbox"/>
Feature B:		b: cm	<input type="checkbox"/>
Feature C:	Large silicone collar for 3Fr (1.7mm OD), 3mm wide	c: 2.5 cm	<input checked="" type="checkbox"/>
<i>Proximal end</i>			
Feature Z:		z: cm	<input type="checkbox"/>
Feature Y:		y: cm	<input type="checkbox"/>
Feature X:		x: cm	<input type="checkbox"/>

PARTS ADDED TO POUCH

Part 1: **Part 2:**