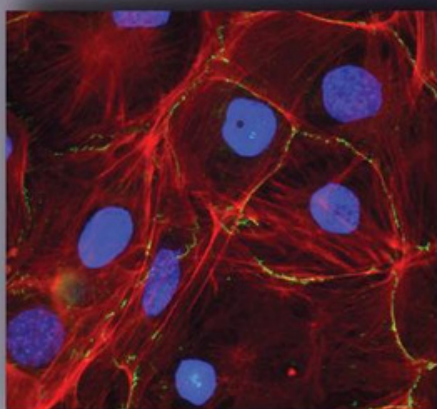


WiSoft®  
**Athena**  
Intuitive, Powerful, Precise

WiSoft®  
**Minerva**  
Smart, Modular, Versatile



## WiSoft® - Effective analysis software packages

A sophisticated image processing algorithmic  
library, operated by a unique and simple  
software interface

# WISOFT®

IDEA Bio-Medical presents a revolutionary technological platform for the drug discovery industry. WiSoft® and other company products, driven by this technological platform, improve the output of drug discovery processes and bring down the exorbitant costs of biomedical and pharmaceutical R&D.

Major elements of the leading technology are WiSoft® and WiScan®:

**WiSoft®:** IDEA Bio-Medical's effective, proprietary analysis software solutions, which provides a significant, sophisticated image processing algorithmic library, operated by a unique and simple software interface.

**WiScan®:** IDEA Bio-Medical's High Definition Cell Imaging technology for High Content Screening processes (HCS), which provides the unique combination of the two contradicting primary features of automated microscopy: Image Quality, and Acquisition Speed.

IDEA Bio-Medical was founded in 2007 through a partnership between YEDA (the Weizmann Institute's commercialization arm) and IDEA Machine Development, Design and Production (an innovation hub).

WiSoft® was launched in 2008.

WiSoft® is a unique **high-speed** image analysis platform. WiSoft® software solutions, Athena and Minerva, are used for a wide variety of biological, biomedical and pharmaceutical applications and were developed through continuous dialogue with users.

WiSoft® offers dedicated solutions for high-content image analysis, with specialty in algorithms for high-resolution images, which enable the analysis of complex biological systems. The **sophisticated** image processing algorithms and statistical evaluations of **multi-parametric** data enable the harvesting of rich information without sacrificing the speed of analysis.

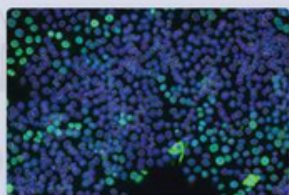
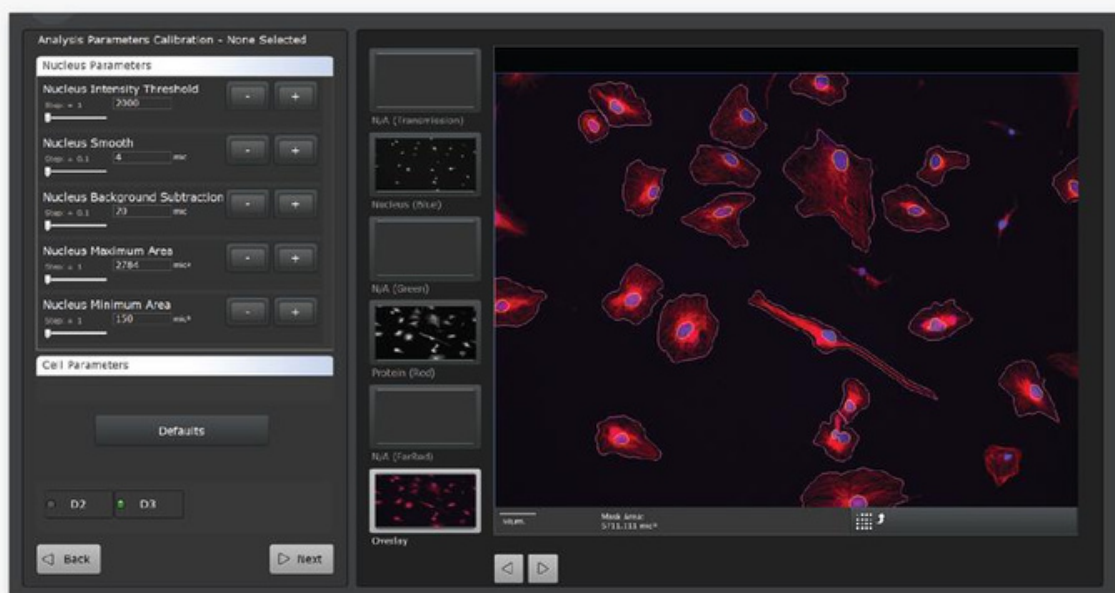
WiSoft® **modularity** provides several optional utilization modes: the adaptation of ready-made analysis modules for specific biological assays, simple programming of analysis scripts using pre-configured image analysis functions, and high-level programming, enabling the addition of algorithms for customized functions.

**WiSoft® Athena** is an application-based software with **intuitive and easy-to-use** user interface for the analysis of HCS data at the push-of-a-button. Nevertheless, WiSoft® Athena is rich with visualization tools and embedded statistical evaluation tools for easy review and reporting of experimental results.

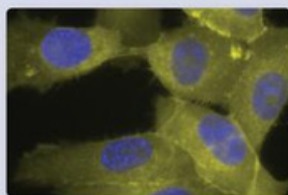
**WiSoft® Minerva** provides an optimal environment for the **development** of analysis scripts for high content assays and for single images. It is based on a library of image analysis modules, as well as statistical evaluation modules and a rich visualization tool kit.

WiSoft® is a product of IDEA Bio-Medical, whose professional team is known for its **creativity** and **responsiveness** to customer support and service.

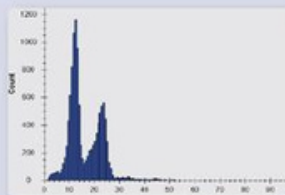
The tool of choice for application-derived analysis and visualization of image based experiments



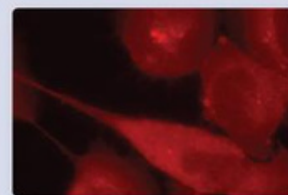
Cell Count



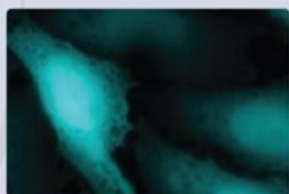
Translocation



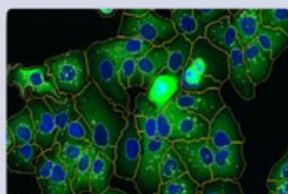
Cell Cycle



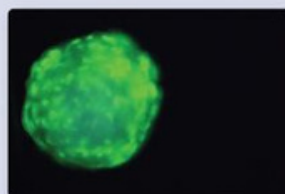
Cell Morphology



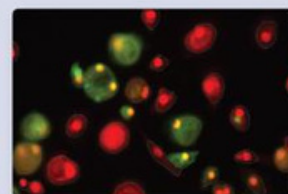
Protein Expression



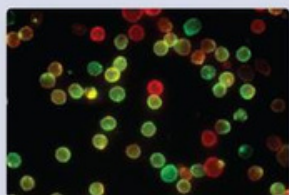
Intracellular Granules



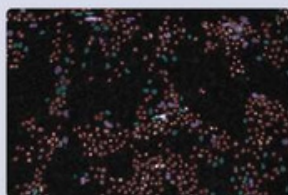
Spheroids and  
3D objects



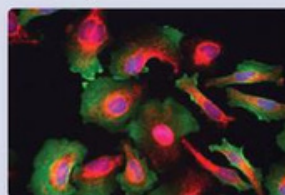
Live/Dead Cell Count



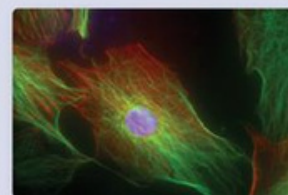
Cytometry



Cell Count in Colonies



Multiplexing

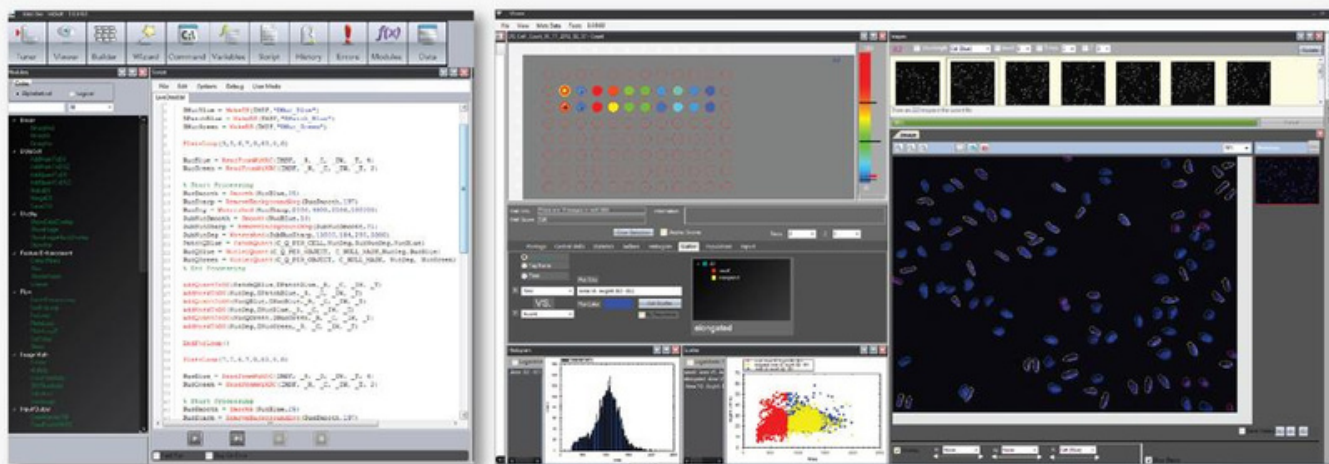


Cytoskeleton Fiber  
Analysis

For more applications please refer to our website [www.idea-bio.com](http://www.idea-bio.com).  
 Applications may be added upon request.

# WISOF<sup>®</sup> MINERVA Smart, Modular, Versatile

The ultimate solution for assay development, visualization, analysis and statistical evaluation of high-content experiments. Offers user friendly flexible and modular tools allowing powerful, yet versatile image processing and analysis.



User defined applications



Modular developer environment



Interactive parameters tuner



User's algorithms incorporation



Multi-parametric statistics



Visualization tools



Cytometry



Temporal data evaluation



3D analysis tools



Outlier exclusion tool

WISOFT®  
**Athena**  
Intuitive, Powerful, Precise

WISOFT®  
**Minerva**  
Smart, Modular, Versatile

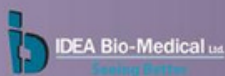


Sophistication, versatility and  
simplicity in image analysis and  
data evaluation.

Poland, Czechia, Slovakia, Hungary, Lithuania,  
Latvia, Estonia, Croatia, Slovenia

**ANIMA LAB**

info@animalab.eu · www.animalab.eu



[www.idea-bio.com](http://www.idea-bio.com)

**Worldwide headquarter**  
IDEA Bio-Medical Ltd.  
2 Prof. Bergman St.  
Rehovot, 76705, Israel  
Phone: +972 732732 400  
Fax: +972 89469 556  
info@idea-bio.com

**Asia - Pacific**  
Chen-Tech Challenge (HK) Limite  
22/F Hing Yip Commercial CTR  
280 Des Voeux Rd. Central, HK  
Phone: +86 20 37651309  
Maor-T@chen-tech.hk

**USA**  
IDEA Bio-Medical Ltd.  
400 Northridge Rd.  
Suite 250  
Atlanta, GA 30350, USA  
Phone: +1-410-412-9106  
info@idea-bio.com