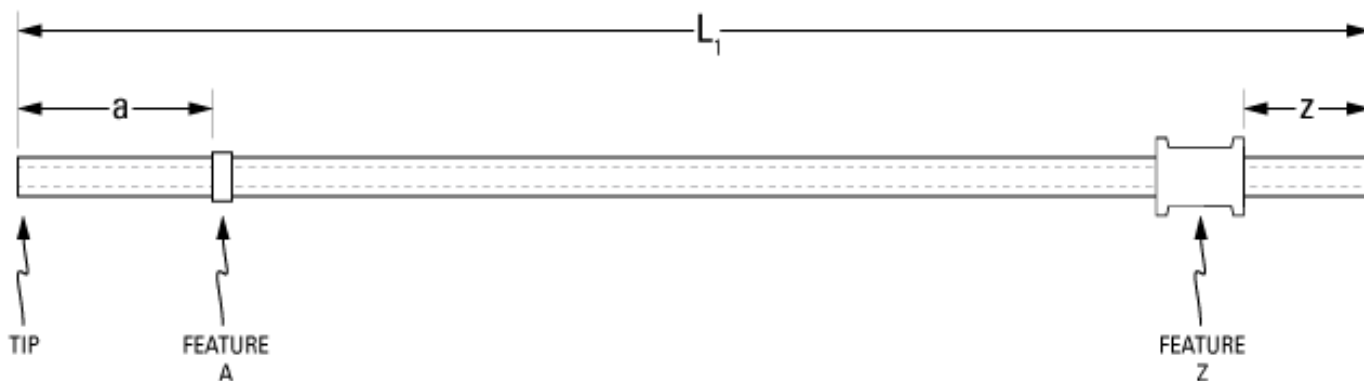


Part Number: **C30PU-RGA1439**



not to scale

Full Description: Gastric catheter for rat, PU 3Fr 25cm, square tip, collar @ 2.5cm, spool collar. Fits 22ga.

Unit: **Pouch Desc:** **Pouch:**

Approx Dead Vol: μ L **Connects to:** **EO Sterilized:**

Intended Species: **Vessel:**

Usage Notes:

TUBING

Tip: **Length 1** **Length 2**
L1: cm **L2:** cm
Material (IDxOD): **Material (IDxOD):**

FEATURES

| Distal (tip) end | | Location | Fixed |
|------------------|---|--|--------------------------|
| Feature A: | <input type="text" value="Small silicone collar for 3Fr (1.3mm OD), 2mm wide"/> | a: <input type="text" value="2.5"/> cm | <input type="checkbox"/> |
| Feature B: | <input type="text"/> | b: <input type="text"/> cm | <input type="checkbox"/> |
| Feature C: | <input type="text"/> | c: <input type="text"/> cm | <input type="checkbox"/> |
| Proximal end | | | |
| Feature Z: | <input type="text" value="PE spool collar for 3Fr (1.6mm OD), 4 mm wide"/> | z: <input type="text" value="2.5"/> cm | <input type="checkbox"/> |
| Feature Y: | <input type="text"/> | y: <input type="text"/> cm | <input type="checkbox"/> |
| Feature X: | <input type="text"/> | x: <input type="text"/> cm | <input type="checkbox"/> |

PARTS ADDED TO POUCH

Part 1: **Part 2:**